

# City of Palmdale



## Redistricting Public Workshop

National Demographics Corp.

# Traducción al Español Disponible

---

## Meeting is Being Recorded

# Introductions

---

# Today's Goals

---

*You* Learn From the Experts

Experts Listen to *You*

Mapping Tools Overview

You Leave Empowered to Give Effective Feedback

# Why You Should Care

- Democracy works better when people are engaged.
- You are experts on the community.
- You are an expert about your neighborhood.
- A once in a decade opportunity.

# Today's Schedule

**AGENDA: 1:00 p.m. – 2:30 p.m.**

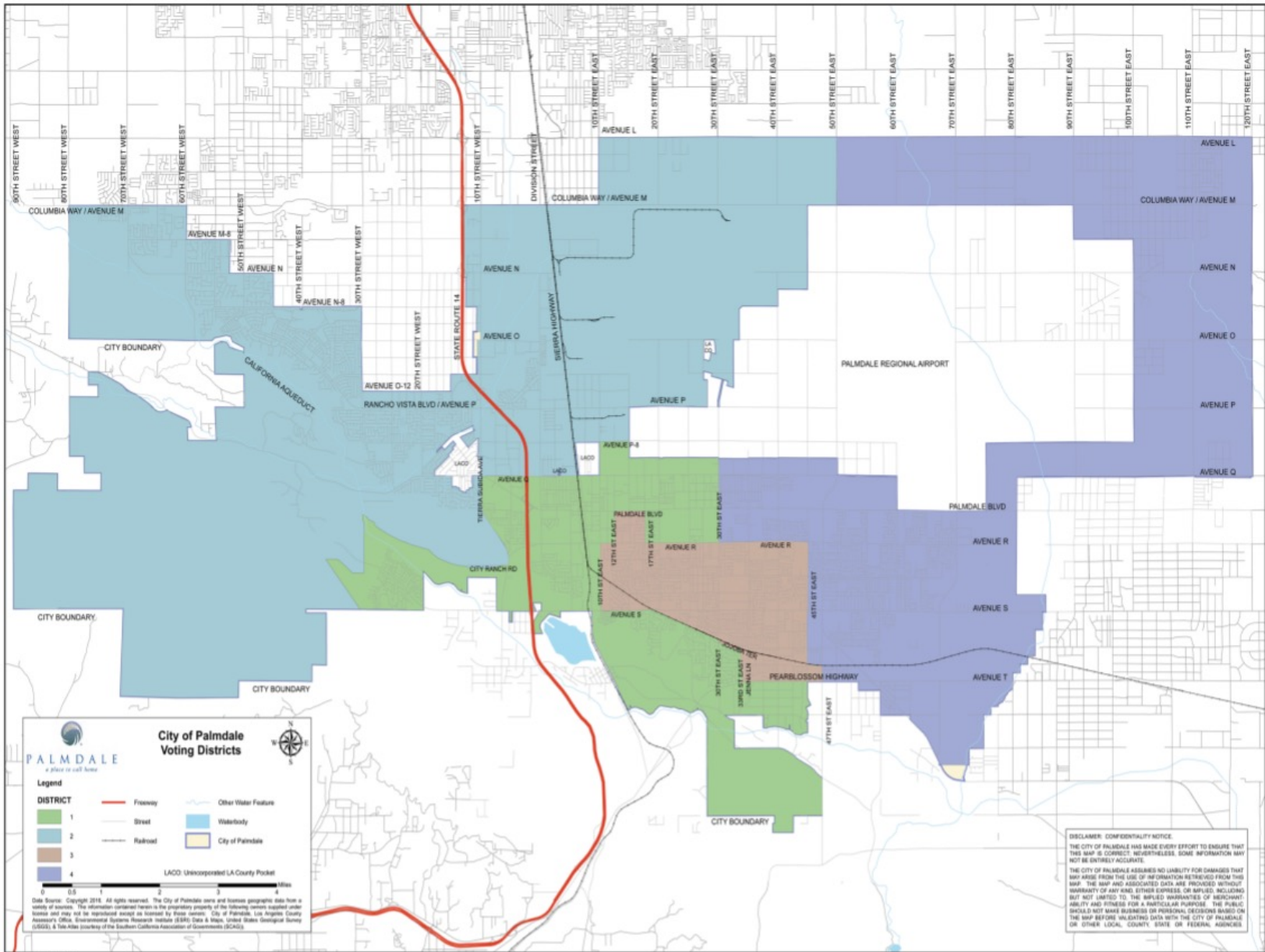
**Process, Rules and Goals**

**Mapping Tools**

**Neighborhoods/Communities of Interest**

**Next Steps**

# Current District Map



# Redistricting Timeline

Date	Event
August 23, 2021	<b>Advisory Redistricting Commission (ARC)</b> convenes
September 14, 2021	<b>1<sup>st</sup> Public hearing</b>
September 20, 2021	California to release official redistricting data
October 12, 2021 October 16, 2021 October 25, 2021	<b>Community Workshops</b> to demo mapping tools and receive public input
November 3, 2021 January 12, 2022 February 2, 2022	<b>Public hearings</b>
<b>April 17, 2022</b>	Legal deadline for Council to adopt new district map

Full schedule available online  
at [DrawPalmdale.org](https://drawpalmdale.org)



# Legal Requirements & Other Goals

## 1. Federal Law

- ✓ Ensure equal population
- ✓ Comply with federal Voting Rights Act
- ✓ Prevent racial gerrymandering

## 2. California Law

1. Ensure geographic **contiguity**
  2. Minimize division of neighborhoods & **“communities of interest”**
  3. Create easily identifiable boundaries
  4. Maintain **compactness**
- ✓ Do not “favor or discriminate against a political party”

## 3. Other Goals

- Minimize changes to election cycles
- Respect voters’ choices
- Preserve core of existing districts
- Anticipate future growth

Do not bypass a nearby population to take in a more distant population

# Demographic Summary of Existing Districts



Each of the 4  
districts must  
contain about  
42,598 people

## *Palmdale Current Districts – 2020 Census*

District		1	2	3	4	Total
2020	Total population	44,930	41,484	41,631	42,349	170,394
	Deviation from ideal	2,332	-1,115	-968	-250	3,446
	% Deviation	5.47%	-2.62%	-2.27%	-0.59%	<b>8.09%</b>
2020 Total Pop	% Hisp	61%	40%	72%	73%	62%
	% NH White	14%	34%	11%	9%	17%
	% NH Black	18%	13%	11%	13%	14%
	% Asian-American	4%	9%	3%	3%	5%
Citizen Voting Age Pop	Total	23,057	25,655	21,933	22,783	93,428
	% Hisp	53%	33%	61%	62%	52%
	% NH White	24%	44%	20%	17%	27%
	% NH Black	17%	13%	13%	17%	15%
	% Asian/Pac.Isl.	5%	9%	5%	4%	6%

# Beyond Neighborhoods: Defining “Communities of Interest”

Under California Elections Code, “community of interest” has a very specific definition in the context of redistricting:



A “community of interest” is a population that shares common social or economic interests that should be included within a single district for purposes of its effective and fair representation.

Definitions of “communities of interest” do **not** include relationships with political parties, incumbents, or political candidates

# What Defines My Community?

## What brings us together?

- Common interests or experiences
- Similar issues or concern
- Shared culture, language, history

+

## Where are we?

- Areas around parks, schools, or other landmarks
- Bounded by highways, major roads, waterways, hills, etc.

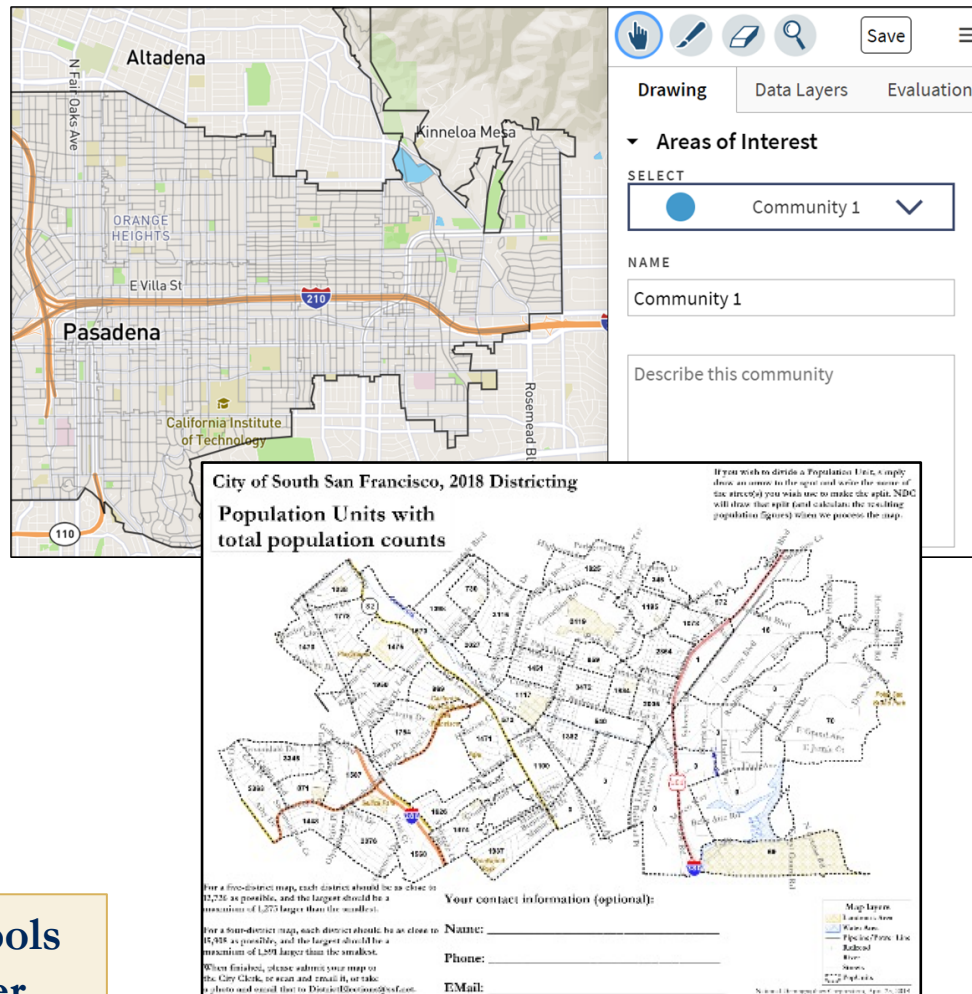
→ Should my community be kept together in  
**ONE** council district?

# Public Mapping Tools

Use the tools to draw your community of interest, the district you want for your area, or an entire citywide map

- **DistrictR:** Easy-to-use online map drawing tool
- **Paper Participation Kit:** Simple paper map drawing tool

Palmdale's mapping tools  
will launch in October



# Q&A With Your Hosts

---

# Your Turn – Communities of Interest

- Who is a part of your community?
- What are some meaningful places your community recognizes or gathers at?
- What are some common concerns you share with a group?
- What are some common cultural characteristics that unite a community?
- What are common work-related traits that bring a community together ?
- What is significant about the physical environment?
- What areas benefit from staying together in a district?

**Your thoughts will become part of  
the record.**

# Upcoming Community Workshops

Date	Location
<b>October 12, 2021</b> <b>5:30 PM</b>	<b>District 1</b> Community Workshop Holiday Inn 38630 5th Street West
<b>October 16, 2021</b> <b>1:00 PM</b>	<b>District 4</b> Community Workshop Knight High School 37423 70th Street East
<b>October 16, 2021</b> <b>5:00 PM</b>	<b>District 3</b> Community Workshop Palmdale Oasis Park Recreation Center 3850 East Avenue S
<b>October 25, 2021</b> <b>6:00 PM</b>	<b>District 2</b> Community Workshop Marie Kerr Park Recreation Center 2723-A West Rancho Vista Blvd.

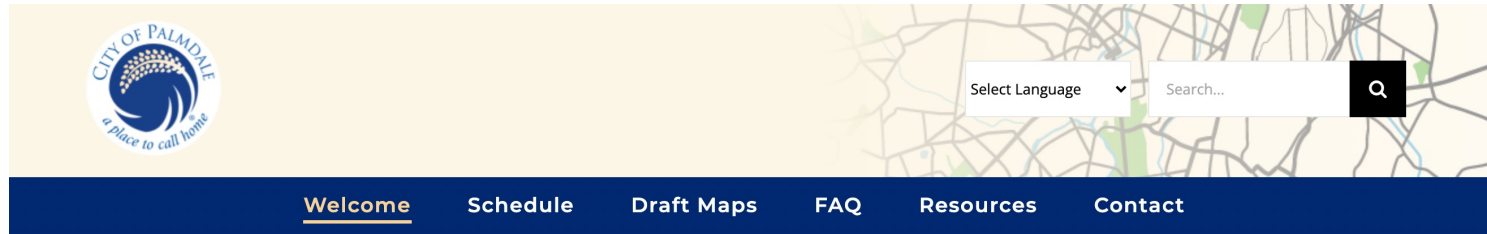


# Next Steps

Date	Event
August 23, 2021	<b>Advisory Redistricting Commission (ARC)</b> convenes
September 14, 2021	<b>1<sup>st</sup> Public hearing</b>
September 20, 2021	California to release official redistricting data
October 12, 2021 October 16, 2021 October 25, 2021	<b>Community Workshops</b> to demo mapping tools and receive public input
November 3, 2021 January 12, 2022 February 2, 2022	<b>Public hearings</b>
<b>April 17, 2022</b>	Legal deadline for Council to adopt new district map

Full schedule available online  
at [DrawPalmdale.org](https://drawpalmdale.org)

# Share Your Thoughts & Continue Engagement



## The Redistricting Process

Every 10 years, local governments use new data from the Census to redraw their district lines to reflect how local populations have changed. State law requires cities and counties to engage communities in the redistricting process by holding public hearings and doing public outreach, including to underrepresented and non-English-speaking communities.

The City of Palmdale is asking for your help to plan, draw, and redive new City districts.

The final map created through the redistricting process will define Palmdale's City Council district boundaries for the next 10 years. There are many ways to participate in redistricting and we invite you to get involved!

## The Advisory Commission

The Advisory Redistricting Commission ("ARC") is comprised of Palmdale residents who primarily reflect the diversity of Palmdale and will act as an advisory body. The City Charter requires the adoption of a map establishing Council District boundaries after the federal government releases the 2020 Census-block population data.

**Next Hearing: November 3, 2021 at 7:30pm**

**Website: [DrawPalmdale.org](https://DrawPalmdale.org)**

**Email: [redistrict2021@cityofpalmdale.org](mailto:redistrict2021@cityofpalmdale.org)**